

# PREDISPOSING AND PRECIPITATING RISK FACTORS FOR SUICIDE IDEATIONS AND SUICIDE ATTEMPTS IN YOUNG AND ADOLESCENT GIRLS

P. MOHAMMADKHANI, Ph.D.,\* M.R. MOHAMMADI, M.D.,† A. DELAVAR,‡ K.S.  
KHUSHABI, M.D.,§\* E. REZAEI DOGAHEH, M.Sc.,\*\* AND H. AZADMEHR, M.Sc.††

*From the University of Welfare & Rehabilitation Sciences, Tehran, Rozbeh Hospital, Tehran University of Medical Sciences, Tehran,  
and Allameh Tabatabaee University, Tehran, Iran.*

## ABSTRACT

**Background:** To investigate the predisposing and precipitating risk factors for suicide ideations and suicide attempts in young and adolescent females, we tried to introduce a holistic model of suicidal behavior in young and adolescent girls.

**Methods:** This study is based on the survey studies and was cross-sectional. Considering high rates of suicide attempts in provinces of Iran, three provinces (Kermanshah, Hamedan, Ilam) which had the highest rates of completed suicide were selected. Then among female high school students (aged 14 to 21 years), in two stages a representative sample was selected by a multi-clusteral and simple randomized sampling methods. The research data were gathered by administering (1) The inventory of predisposing and precipitating factors of suicide, demographic and family characteristics (based on the literature review) (2) Symptom Check List (SCL) 90-R (3) Suicidality Subscale of the Depressive Symptom Index (DSI-SS) (4) Center for Epidemiological Studies (CED- SSI) (5) Beck Hopelessness Scale (BHS) and (6) Child Abuse Self Report Scale (CASRS). Then, subjects were characterized by dividing them in to two categories: at risk, and low risk. The scores of 2 categories were analyzed and discussed.

**Results:** Relationships were found between suicide ideations and psychological problems and disorders (especially depression). Also, the students who reported suicide ideation and suicide attempt had a history of being abused. Based on the results, predisposing and precipitating risk factors and also some protective factors of suicide ideations and suicide attempts were found and a theoretical model was presented.

**Conclusion:** Some predisposing, precipitating and protective factors can predict suicide ideation and suicide attempts significantly.

*MJIRI, Vol. 20, No.3, 123-129, 2006.*

**Keywords:** Suicide ideations, Suicide attempts, Predisposing factors, Precipitating factors

## INTRODUCTION

In recent years, there have been growing concerns about increasing rates of suicide in adolescents. The trend has been clearly evident in some provinces of Iran with

\* Associate Professor, University of Social Welfare and Rehabilitation Sciences.

† Professor, Tehran University of Medical Sciences.

‡ Professor, Alameh Tabatabaee University.

§ Associate Professor, University of Social Welfare and Rehabilitation Sciences. kkhushabi@yahoo.com

\*\* M.Sc. University of Social Welfare and Rehabilitation Sciences.

†† M.Sc. Social Welfare Organization.

\* Corresponding author: kkhushabi@yahoo.com

## Suicide Risk Factors for Young Girls

statistics reporting rising rates of youth suicide since the 1990s. Although international comparisons (National Center for Health Statistics, 2001) show that Iran has a low rate of suicide among 72 countries (0.1 per 100,000), the rate is high (29 per 100,000) in parts of the country (Center for Social Studies of Iran prime ministry, 2002).

In 1998, the world rate of female suicide mortality for 15-to 24-year-olds was 7.7 per 100,000 (National Center for Health Statistics, 2001). In the United States the ratio of male to female suicide in young children was approximately 3:1, but thereafter the rate increased rapidly for boys and slightly for girls, so that among 15-to-19 year-olds it was 4.5:1 and among 20-to-24-year-olds it was greater than 6:1.<sup>1</sup> The incidence of attempted suicide is disproportionately high among single adolescent girls.<sup>2</sup>

The concept of suicidal behavior includes thoughts about causing intentional self-injury or death (suicidal ideas) and acts that cause intentional self-injury (suicide attempt) or death (suicide). Some researchers believe that suicidal behavior involves a continuum that includes non-suicidal behavior, suicidal ideas, suicide attempts, and suicide.<sup>3</sup> Researchers<sup>4-6</sup> suggested that certain factors, such as depression, death preoccupation and general psychopathology are directly proportional to the severity of suicidal behavior. Suicidal behavior is a complex symptom that is markedly influenced by sociocultural factors and on a more microscopic level by presence of psychiatric disorders, other psychiatric symptoms, stressful life events, and poor social adjustment. As Lewis<sup>3</sup> noted, "to better conceptualize the components of youth suicidal behavior, a multi-axial approach, similar to that of the DSM-IV classification for psychiatric disorders, may be utilized as a model of integrating the multifocal attributes associated with suicidal behavior in children and adolescents". Controlled studies of suicide suggest similar risk factors for boys and girls.<sup>7</sup> The most significant risk factor for girls is the presence of major depression, which, in some studies, increases the risk of suicide 20-fold.<sup>8</sup> The next most important risk factor is a previous suicide attempt, which increases the risk of suicide significantly.<sup>9</sup> In order to better conceptualize and examine the vast range of relevant variables in suicide ideation and suicide attempt, they could be outlined in accordance with three related categories: (a) predisposing or background, (b) precipitating or facilitating and (c) protecting or supporting factors. Risk factors are those conditions and events

that make a person more vulnerable to the possibility of committing suicide. On the other hand, while the immediate context is critical as the precipitating cause, there are also underlying vulnerabilities which predispose certain individuals to resort to self-harming when confronted with personal crisis. These are now being designated "risk factors". Recent works<sup>10</sup> emphasize the need in prevention work to address both the immediate causes and the underlying risk factors.

Also, such issues as unemployment and poor long-term job prospects are frequently noted as demographic risk factors of youth suicide. For example Beautrais et al.<sup>11</sup> found that young people between the ages of 13 and 24 who had made medically serious suicide attempts were more likely to have suffered social disadvantage than other young people. In particular, they were more likely to have no formal educational qualifications. Young people who had attempted suicide are also more often found to come from disadvantaged family backgrounds, or in poor economic circumstances. There is also some evidence that young people from families with histories of parental separation or divorce have an increased risk of suicide attempt.<sup>12</sup> The important role of family structure is also notified by many other researchers. Eshtain<sup>13</sup> found that three out of four teenage suicides occur in households where a parent has been absent. Lester<sup>14</sup> reported "among the possible contributing factors, only divorce rates were consistently associated with suicide and with homicide rates". Beautrais<sup>15</sup> reviewed a series of studies about increased rates of suicidal behavior in young people with histories of exposure to parental psychopathology including depression, substance abuse disorder and antisocial behavior. She also pointed to the importance of parent – child relationships: "there is consistent suggestion that impaired parent-child relationship, poor family communication styles, extremes of high and low parental expectations and control are associated with increased risk of suicidal behaviors among adolescents".

A further set of risk factors for youthful suicidal behavior comprises individual and personal psychopathology. Young people with mood disorders have a markedly increased risk of suicide.<sup>16</sup> Depression is involved in over half of all attempted suicides.<sup>2</sup> Therefore psychiatric comorbidity is a significant predisposing risk factor for suicide attempt. Kendall-Tackett, Williams and Finkebor<sup>17</sup> revealed the impacts of traumatic experiences, particularly sexual

**Table I.** Demographic information of the present study sample.

Provinces (N, %)	Marital Status			Educational Degree				Socioeconomic Status			
	Single	Married	Widowed	First	Second	Third	Fourth	Very Good	Good	Average	Weak
<b>Kermanshah</b> (n=1312, 49.5%)	1286 (98.0%)	49 (3.73%)	2 (0.15%)	319 (24.1%)	420 (32.0%)	344 (26.2%)	250 (19.1%)	64 (4.88%)	539 (41.1%)	634 (48.3%)	94 (7.16%)
<b>Hamedan</b> (n=940, 35.5%)	910 (96.8%)	24 (2.55%)	4 (0.43%)	142 (15.1%)	282 (30.0%)	318 (33.8%)	121 (12.9%)	63 (6.70%)	449 (47.8%)	361 (38.4%)	54 (5.74%)
<b>Ilam</b> (n=398, 15.0%)	390 (98.0%)	6 (1.51%)	—	89 (22.4%)	126 (31.7%)	78 (19.6%)	91 (22.9%)	33 (8.29%)	203 (51.1%)	135 (33.9%)	21 (5.28%)
<b>Total</b> (n=2650, 100%)	2586 (96.9%)	79 (2.98%)	6 (0.23%)	547 (20.6%)	825 (31.2%)	740 (27.9%)	462 (17.4%)	160 (6.04%)	1191 (44.9%)	1130 (42.6%)	169 (6.38%)

**Table II.** The inter-item correlations of four items from the DSI-SS.

	Item A	Item B	Item C	Item D
Item A	0.77			
Item B	0.70	0.82		
Item C	0.74	0.82	0.85	
Item D	0.64	0.65	0.67	0.77

abuse on adolescent self-destructive and suicidal behaviors. Long-term psychological sequelae of sexual and physical abuse may include a group of psychological problems including depressive disorders, drug and alcohol abuse, suicidal behavior and somatization disorders.<sup>18</sup> While many studies have examined risk factors for suicidal behavior, few studies have focused on the role of various social and family supports in buffering the impacts of exposure to known risk factors for suicide. It has been claimed that both marriage and parenthood protect against suicide.<sup>19</sup> Rutter and Smith<sup>20</sup> have suggested that holding attitudes and moral values against suicide may protect young people against suicide.

In this study, the contribution to suicide ideation and attempted suicide of reviewed risk factors (demographic variables, family characteristics, medical or psychiatric diagnosis, psychopathology and a history of being abused) in the Iranian female population were evaluated.

## MATERIAL AND METHODS

### Participants

The data reported here were collected in three stages. In the first stage, we referred to the completed suicide records of 24 provinces of Iran for the year 2002, and the provinces with the highest rates of death (Kermanshah, Hamedan, Ilam) by suicide were noted. From these three provinces 65,887 female high school students were determined as the population sampling framework for the study.

In the second and third stages, through a double-stage cluster sampling and then by simple randomized sampling, 2650 students were selected as the final sample group (their age range was 14 to 21 years; mean=16.27 years, SD=1.30 years). Table I shows the demographic features of the sample.

### The instrument package

Data were obtained through a self-administered instrument package. The package consisted of several questionnaires that measured demographic factors and family characteristics, psychopathology, suicide thoughts and attempted suicide, hopelessness and the history of being abused. In this study, psychopathology was assessed by the Symptom Check List (SCL-90-R) inventory.<sup>21</sup> The SCL-90-R is a 90-item self-report symptom inventory developed by Derogatis; it is designed primarily to reflect the psychological symptom patterns of psychiatric and medical patients. A preliminary version of the scale was introduced by Derogatis and his colleagues and based on early clinical experiences and psychometric analysis, was modified and validated in the present revised form.<sup>21</sup> Each item of the "90" is rated on a 5-point scale of distress (0-

4), ranging from "not-at-all" at one pole to "extremely" at the other. The "90" is scored and interpreted in terms of 9 primary symptom dimensions and 3 global indices of distress.<sup>21</sup> These are labeled:

- I. Somatization
  - II. Obsessive-Compulsive
  - III. Interpersonal Sensitivity
  - IV. Depression
  - V. Anxiety
  - VI. Hostility
  - VII. Phobic Anxiety
  - VIII. Paranoid Ideation
  - IX. Psychoticism
- Global Severity Index (GSI)  
Positive Symptom Distress Index (PSDI)  
Positive Symptom Total (PST)

Reliability measures concerning the 9 primary symptom dimensions of the SCL-90-R are quite satisfactory ranging between a low of 0.77 for psychoticism to a high of 0.90 for depression. About the validation of SCL-90-R, Derogatis<sup>21</sup> indicates that "by demonstrating positive correlations between scale values and external criteria felt to be good reflection of the construct, validation is initiated". Several studies have contrasted the SCL-90-R with other established multidimensional measures of psychopathology. Derogatis, Rickels and Rock<sup>21</sup> contrasted the dimension scores of the "90" with scores from the MMPI. Each dimension has its highest correlation with a like construct, except in the case of O-C for which there is no directly comparable MMPI scale. Results of the study reflected a high degree of convergent validity for the "90" which represent a very important step in the validation program.

Suicidality was assessed by two different sets of screening items. The first set of screening items was the suicidality subscale of the depressive symptom index.<sup>22</sup> It is a brief screening tool for suicidality in young people in the general health setting. Table II displays the inter-item correlations of the four items from the DSI-SS suicide screen as well as corrected item-total correlations.

Accordingly, coefficient alpha for the DSI-SS was quite acceptable (alpha=0.90). Also, the correlation between CES-D depressive symptoms and DSI-SS for construct validity was 0.60 ( $p<0.001$ ) and correlation between DSI-SS and GHQ was 0.49 ( $p<0.0001$ ).<sup>23</sup>

The second suicidality screening set of items was Lewinsohn et al's screeners<sup>24</sup> which were developed in the format of the CES-D. It has been used primarily in general community samples for epidemiologic/screening surveys. In a large sample of 6th to 8th grade students, responses to the Lewinsohn et al. (1996) screener were strongly correlated ( $r=0.70$ ) with CES-D total scores.<sup>25</sup> In addition, suicidal ideation as assessed with the CES-D screener was found to be related to loneliness and living in other than two-parent family. In a sample of incarcerated adolescents, several variables were found to be correlated with the Lewinsohn's CED suicidal ideation screener (for both genders): current depression, features of borderline personality disorder, major life events, loneliness, lower self-esteem, and greater impulsivity.<sup>26</sup>

## Suicide Risk Factors for Young Girls

**Table III:** The list of predisposing risk factors and their relationship to suicide thoughts and attempts.

Predisposing Risk Factor	Suicide thoughts		Suicide attempts	
	Significant relationship	Predictors	Significant relationship	Predictors
<b>I. Demographic Variables</b>				
Age	-		++	
Marital status	-		++	
Educational degree	+		+	
Education	+		++	*
<b>II. Family Characteristics</b>				
Father's age	-		-	
Mother's age	-		-	
Parent's income	-		-	
Socio-economic status of family	+		++	*
Father's education	-		+	
Mother's education	+		+	
Father's job	-		+	
Mother's job	-		-	
Family members	-		+	*
Death of father	-		-	
Death of mother	-		-	
Parent's divorce	+		+++	*
Family record of addiction	++		++	*
Family record of breaking the law	+++	*	+++	
Family record of committing suicide	+++	*	+++	***
Family record of psychiatric disorders	+++		++	*
<b>III. Medical or Psychiatric diagnosis</b>				
History of physical illness in participant	-		-	
History of psychiatric disorder in participant	++		+++	**
History of psychiatric hospitalization	++		+	*
Sudden change in participant's health	+++		++	
<b>IV. Psychopathology</b>				
Participant psychopathology	+++	***	+++	**
History of addiction in participant	+++	**	++	*
History of breaking the law in participant	+		+	*
<b>V. Abuse Experiences in participants</b>				
Psychological abuse	+++		+++	**
Neglect	+++		+++	
Physical abuse	+++		+	
Sexual abuse	?		?	

**Note:** (+ = significant relationship; - = non-significant relationship; ? = unknown relationship due to low observed or expected frequency; \* = significant explanation of variance in dependent variables; number of + or \* = number of studied provinces).

Furthermore, a brief screening measure with four questions was designed by researchers to assess the risk of suicide attempt in participants. Preliminary data on reliability for DSI-SS ( $\alpha=0.89$ ) and validity of DSI-SS and CES-D in Iranian population by calculation of their correlation with the above measure ( $r=0.561$ ;  $p<0.001$ ) was quite acceptable. Also, the correlation between item 59 of SCL-90-R and attempt total score ( $r=0.308$ ;  $p<0.001$ ) and ideation total score ( $r=0.504$ ;  $p<0.001$ ) was quite considerable.

Child Abuse Self Report Scale (CASRS) is a 38-Item scale with four sub-scales for assessing different types of abuse. It contains (a) 14 items for psychological abuse, 11 items for neglect, 8 items for physical abuse and finally 5 items for sexual abuse.<sup>26</sup>

### Procedures

Because the main purpose of this study was to recognize the risk factors associated with high suicidal ideation and attempt, it was concluded that a retrospective cross-sectional design would be most feasible. To achieve the research goals, a student sample was considered most appropriate because the rates of attempted suicide were high among the population (Mohammadkhani, Rezaei Doga-

heh, Nazari & Mohammadi, 2004). The data collection procedure was started by receiving permission to conduct the study from the school principals, and approval from the Research Department of the Welfare & Rehabilitation University of Iran. The administrators explained the study to students and sought their assent. On the day of data collection all students were given both written and verbal explanation of the study, and questionnaires were completed during two normal class periods. Subjects were assured of confidentiality and asked not to write their names on any part of the booklet. Given the sensitive nature of some sections of the questionnaire, an invitation was delivered to them to contact the administrator should they experience distress.

### Data analysis

Data were analyzed using the SPSS software. (1) Based on high scores on DSI-SS, CED-SSI and researcher's measure for assessing risk of suicide attempt, the participants were divided to "suicide ideators" and "suicide attempters" (extreme groups). Frequency and descriptive statistics were calculated to check all relevant characteristics of suicide ideators and attempters. (2) The significance of independent variables (i.e. predisposing,

**Table IV:** The list of precipitating risk factors and their relationship to suicide thoughts and attempts.

Precipitating Risk Factors	Suicide thoughts		Suicide attempts	
	Significant relationship	Predictors	Significant relationship	Predictors
<b>I. Educational Factors</b>				
Educational failure	+++		+++	**
Expulsion from school	++		++	
School problems	+++		++	
Exposure to peers attempted suicide	+++	**	+++	**
<b>II. Family Stressors</b>				
Parent's discord	+++	*	+++	**
Sudden change in parent's health	+++		+++	*
Sudden change in parent's economical status	+++	*	+++	
Participant's conflict with family	+++	*	+++	**
Family rigid rules	+++	**	+++	**
<b>III. Recent Life Stressors</b>				
Failure in love	+++	**	+++	***
Threatened to be left by beloved	+++	**	+++	**
Forced marriage	++		++	*
Recent life event	+++		+++	

**Note:** (+= significant relationship; -= non-significant relationship;\*= significant explanation of variance in dependent variables; number of + or \* = number of studied provinces).

precipitating and protective factors)/suicide ideations and attempts, were tested with cross-tabulation analyses and t-tests. For categorical variables, Pearson's chi-square was employed to determine any significant interaction. (3) Furthermore, we conducted multiple regression analysis for this purpose, all above factors were entered into regression for the purpose of explaining the variance in each of the two dependent variables (suicide ideations and suicide attempts), as criterion variables. (4) Finally, the proposal model of suicidal behavior was presented among the population, using the data on stages (2) and (3).

**RESULTS**

As Table III presents, among demographic variables, a significant relationship was found between educational degree ( $\chi^2= 8.55, p<0.36$ ) and education of participants ( $\chi^2= 15.4, p<0.04$ ) with suicide thoughts in one of the three provinces. So, they are considered as the first group of significant predisposing risk factors for suicide thoughts.

Similarly, among family characteristics, socio-economic status of the participant's family ( $\chi^2=22.40, p<0.0001$ ), participant's mother's educational level ( $\chi^2=6.679, p<0.035$ ), parent's divorce ( $\chi^2=5.198, p<0.023$ ), family record of addiction ( $\chi^2=11.683, p<0.001$ ), family record of breaking the law ( $\chi^2=4.457,$

$p<0.035$ ), family record of committing suicide ( $\chi^2=52.091, p<0.000$ ) and family record of psychiatric disorders ( $\chi^2=16.925, p<0.000$ ) had significant relationships with suicide thoughts.

Comparisons revealed significant relationships between having a history of psychiatric disorder in participants ( $\chi^2=5.004, p< 0.025$ ), history of psychiatric hospitalization ( $\chi^2=18.539, p<0.000$ ), and sudden change in participant's health ( $\chi^2=29.391, p<0.000$ ) and having suicide thoughts.

Participants' psychopathology ( $\chi^2=121.112, p<0.000$ ), their history of addiction ( $\chi^2=12.616, p<0.000$ ) and breaking the law ( $\chi^2=0.187, p<0.665$ ) were also significantly related to suicide thoughts.

Psychological abuse ( $\chi^2=78.682, p<0.000$ ), neglect ( $\chi^2=76.507, p<0.000$ ) and physical abuse ( $\chi^2=15.236, p<0.000$ ) as predisposing risk factors have strong relationship with suicide thoughts. As represented in Table IV, all subgroups of precipitating risk factors were significantly related to suicide thoughts. Educational failure ( $\chi^2= 8.43, p<0.004$ ), expulsion from school ( $\chi^2=9.32, p<0.002$ ), school problems ( $\chi^2=14.63, p<0.001$ ), and exposure to peers attempt ( $\chi^2=16.17, p<0.001$ ) had strong relationship with suicide thoughts.

Among family stressors, parent's discord ( $\chi^2=64.74,$

**Table V:** The list of protective factors and their relationship to suicide attempts.

Protective Factors	Suicide Attempts	
	Significant relationship	Predictors
I. Family support	++	
II. Family religious beliefs	++	*
III. Religiosity of participants	++	
IV. Participation in nonreligious places	-	
V. Hopefulness	-	

**Note:** (+= significant relationship; -= non-significant relationship;\*= significant explanation of variance in dependent variables; number of + or \*= number of studied provinces).

## Suicide Risk Factors for Young Girls

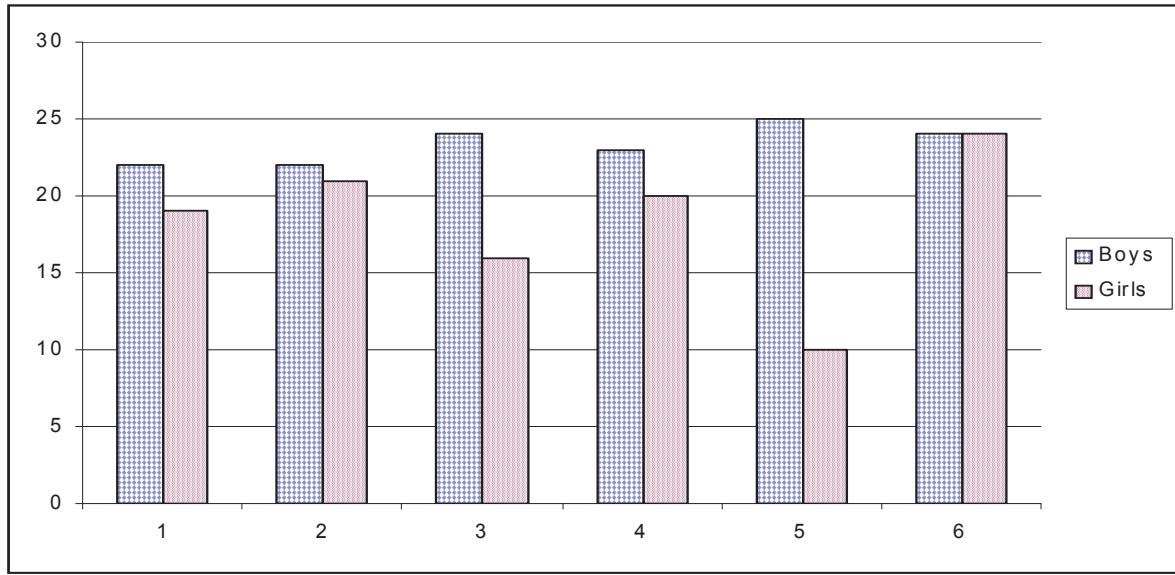


Fig. 2. Bar diagram of function in studied groups in parents' questionnaire with sex / age group separation.

$p < 0.001$ ), sudden change in parent's health ( $\chi^2 = 23.73$ ,  $p < 0.001$ ), sudden change in parent's economical status ( $\chi^2 = 11.97$ ,  $p < 0.001$ ), participant's conflict with her family ( $\chi^2 = 52.26$ ,  $p < 0.001$ ) and family's rigid rules ( $\chi^2 = 35.51$ ,  $p < 0.001$ ) were significantly related to high suicide ideations. Failure in love ( $\chi^2 = 62.62$ ,  $p < 0.001$ ), threaten to be left by beloved ( $\chi^2 = 100.5$ ,  $p < 0.001$ ), forced marriage ( $\chi^2 = 13.03$ ,  $p < 0.001$ ) and recent life event ( $\chi^2 = 41.26$ ,  $p < 0.001$ ) were other precipitating risk factors, that were related to suicide thoughts. Owing to limitations of space, we dispense with presenting the results of the relationships between above risk factors and suicide attempts (see Table III, IV and V). These results can be obtained from the authors upon request.

The second major type of analysis focused on multiple regression analyses. The results indicated that family record of breaking the law ( $\chi^2 = 126.79$ ,  $p < 0.0001$ ), family record of committing suicide ( $\chi^2 = 126.79$ ,  $p < 0.0001$ ), participant's psychopathology ( $\chi^2 = 126.79$ ,  $p < 0.0001$ ) and her history of addiction ( $\chi^2 = 126.79$ ,  $p < 0.0001$ ) as predisposing risk factors could significantly anticipate the suicide ideations.

Furthermore, the results revealed that among precipitating risks, exposure to peers' attempted suicide ( $\chi^2 = 114.31$ ,  $p < 0.0001$ ), parents' discord ( $\chi^2 = 1119.82$ ,  $p < 0.0001$ ), sudden change in parent's economical status ( $\chi^2 = 114.31$ ,  $p < 0.0001$ ), participant's conflict with her family ( $\chi^2 = 1119.82$ ,  $p < 0.0001$ ), family's rigid rules ( $\chi^2 = 1119.82$ ,  $p < 0.0001$ ) and threat to be left by beloved ( $\chi^2 = 1119.82$ ,  $p < 0.0001$ ) anticipate the suicide thoughts, significantly.

As Table IV presents, family religious beliefs were the only protective factor that could significantly anticipate the suicide attempts ( $\chi^2 = 12.41$ ,  $p < 0.02$ ).

### CONCLUSION

The results of the current study suggest that suicidal behavior in young females seems to happen frequently, al-

though not invariably, in the presence of multiple risk factors which as Beautrais<sup>15</sup> has noted "encourage the development of suicidal behaviors". The risk factor domains that may contribute to this process include (1) socio-demographic features, (2) familial characteristics, (3) individual psychopathology, and (4) environmental risk factors.

One might have to consider the influence of above risk factors that may be modified or changed by cultural and contextual features of the society and some protective factors that may act to discourage the development of suicidal behaviors.

One way of summarizing these findings are suggested by the conceptual model in Fig. 1. This model assumes that there are a series of correlated sets of factors (individual, family and environmental factors) which act as effective determinants for suicidal behaviors. Risk is increased by a variety of psychological symptoms (including depression, anxiety, somatization and psychoticism), having a history of addiction and traumatic experiences particularly previous attempts. As Shaffer<sup>8</sup> indicated "stressful events occur commonly within most adolescent suicides". So, recent stressful life events like being threatened to be left by a beloved one, forced marriage and, exposure to suicide attempts are all important environmental risk factors.

Also, this model emphasizes on the role of family characteristics in attempting suicide. Disturbed and discarded parents with history of psychiatric disorders, addiction, previous suicide attempts and low socio-economic status encourage attempting suicide in family members.

Finally, the likelihood that a young female will proceed to attempt or commit suicide will vary as a function of cultural milieu and power of the protective factors.

### ACKNOWLEDGEMENTS

The authors are especially grateful to the Women's Branch of the Prime Minister Foundation for its financial support.

REFERENCES

1. National Center for Health Statistics (Center for Disease Control and Prevention) (2001). Distribution of suicide rates, by gender and age, website: <http://www.cdc.gov/nchs/datawh/statab/unpubd/mortabs.htm>.
2. The Merck Manual of Diagnosis and Therapy Suicidal Behavior, Sec. 15. Ch 190; 2002. Website: <http://www.merck.com/pubs/mmanual/section15/chapter190/190a.htm>.
3. Lewis, Melvin: Child and adolescent psychiatry, a comprehensive textbook, Second edition, Williams & Wilkins, 1996.
4. Brent DA, Perper JA, Goldstein CE, et al: Risk factors for adolescent suicide: a comparison of adolescent suicide victims with suicidal inpatients. Arch Gen Psychiatry 45: 581-588, 1988.
5. Pfeffer CR, Plutchik R, Mizruchi MS, et al: Suicidal behavior in child psychiatric inpatients and outpatients and in nonpatients. Am J Psychiatry 143: 733-738, 1986.
6. Pfeffer CR, Solomon G, Plutchik R, et al: Suicidal behavior in latency-age psychiatric inpatients: A replication and cross validation. Am Acad Child Psychiatry 21: 564-569, 1982.
7. Brent DA, Baugher M, Bridge J, Chen T, Chiappetta L: Age- and sex-related risk factors for adolescent suicide. J Am Acad Child Adolescent Psychiatry 38: 1497-1505, 1999.
8. Shaffer D, Gould MS, Fisher P, et al: Psychiatric diagnosis in child and adolescent suicide. Arch Gen Psychiatry 53: 339-348, 1996.
9. Shaffer D, Pfeffer R: Practice parameter for the assessment and treatment of children and adolescents with suicidal behavior. Journal of American Academy of Child and Adolescent Psychiatry 40: 24-57, 2001.
10. Kosky L: Youth suicide in Australia; multiplicity of risk factors, Health Services Division, 2000. Website: <http://www.health.gov.au/resources/nysps/causes.htm>.
11. Beautrais AL, Joyee PR, Mulder RT: Youth suicide attempts: a social and demographic profile. Australian and New Zealand Journal of Psychiatry 32: 349-357, 1998.
12. Brent DA, Perper JA, Moritz G, Liotus L, Schweers J, Balach L, Roth C: Familial risk factors for adolescent suicide: A case control study. Acta Psychiatrica Scandinavica 89: 52-58, 1994.
13. Eshtain JB: Family matters: The plight of America's children. The Christian Century, July 14-21, 1993.
14. Lester D: Time series versus regional correlates of rates of personal violence. Death Studies 529-534, 1993.
15. Beautrais AL: Risk factors for suicide and attempted suicide among young people. Australian and New Zealand Journal of Psychiatry 34: 420-436, 2000.
16. Sadock B, Sadock VJ: Comprehensive Textbook of Psychiatry, Seventh edition, Vol. 2, Lippincott Williams & Wilkins, 2000.
17. Kendall-Tackett K, Williams LN, Finkelhor D: Impact of sexual abuse on children: A review and synthesis of recent studies. Psychological Bulletin 113(1): 164-180, 1993.
18. Shaw JA, Lewis JE, Loeb A, Rosado J, Rodrigues R, A: A Comparison of Hispanic and African-American sexually abused girls and their families. Journal of Child Abuse & Neglect 25: 1363-1379, 2000.
19. Nisbet PA: Protective factors of suicidal black females, suicide and life-threatening behavior 26: 325-341, 1996.
20. Rutter M, Smith DJ: Psychosocial disorders in young people: time trends and their causes, Chichester: John & Wiley, 1995.
21. Derogatis LR: SCL-90-R; Administration, Scoring & Procedure Manual-II, Clinical Psychometric Research, 1992.
22. Metalsky GI, Joiner TE Jr: The hopelessness depression symptom questionnaire. Cognitive Therapy and Research 21: 359-384, 1997.
23. Joiner TE; Pfaff JJ, Acer JG: A brief screening tool for suicidal symptoms in adolescents and young adults in general health setting: reliability and validity data from the Australian National General Practice Youth Suicide Prevention Project; Behavior Research and Therapy 40: 471-481, 2002.
24. Lewinsohn PM, Rohde P, Seeley JR: Adolescent suicidal ideation and attempts. Clin Psychol Sci Pract 3:25-46, 1996.
25. Roberts R, Chen Y: Depressive symptoms and suicidal ideation among Mexican-origin and Anglo adolescents. Journal of American Academy of Child and Adolescent Psychiatry 34: 81-90, 1995.
26. Rohde P, Seeley J, Mace D: Correlates of suicidal behavior in a juvenile detention population. Suicide and Life-Threatening Behavior 27: 164-175, 1997.
27. Mohammadkhani P, Rezaei Dogaheh E, Nazari MA, Mohammadi MR: Psychological profile of adolescent girls with high levels of suicide ideation and suicide attempt. International Journal of Mental Health & Addiction 2004. [www.ecommunity-journal.com](http://www.ecommunity-journal.com).
28. Mohammadkhani P, Mohammadi MR, Nazari MA, Salavati M, Razzaghi OM: Development, validation and reliability of child abuse self-report scale (CASRS) In Iranian students. Medical Journal of the Islamic Republic of Iran 17(1): 51-58, 2003.
29. Center for Social Studies of Iran Prime Ministry (2002): The statistical report of death by suicide in year 2002, unpublished report.