

Effects of creatine supplementation on learning, memory retrieval, and apoptosis in an experimental animal model of Alzheimer disease

Malek Ali Mohammadi¹, Mohammadreza Eshraghian²
Mohammad-Reza Zarindast³, Abbas Aliaghaei⁴, Hamideh Pishva^{*5}

Received: 27 July 2014

Accepted: 7 January 2015

Published: 4 October 2015

Abstract

Background: Alzheimer disease is the main cause of dementia in middle-aged and elderly people. Considering the improving effects of creatine supplementation on cognitive performance, this study aimed to determine the effects of creatine supplementation on learning, memory, and apoptosis in an experimental model of Alzheimer's disease.

Methods: Thirty-two male Wistar rats each weighing 250±50 grams were divided into four groups. The AdCr+ (A β injection, creatine supplementation) and AdCr- groups (A β injection, no creatine supplementation) were injected bilaterally with amyloid beta (A β) (0.2 μ g in each CA1 area), and the sham group was injected with normal saline in the same area. After the injection, the AdCr+ group received a diet of 2% creatine for six weeks. The control group underwent no surgical or dietary intervention. After six weeks the Morris Water Maze (MWM) test was administered, to measure learning and memory retrieval. After sacrificing the animals, TUNEL staining for an anti-apoptosis assay was performed for the sham, AdCr+, and AdCr- groups. All groups were compared by independent t-test using SPSS software.

Results: Results of MWM show that rats in sham and control groups performed better than those in the AdCr- and AdCr+ groups. Compared to sham group, AdCr+ and AdCr- groups had more TUNEL positive neurons count. Results indicated no differences between the AdCr+ and AdCr- groups in learning, memory retrieval, and percentage of TUNEL positive neurons.

Conclusion: After A β injection, creatine supplementation had no effect on learning, memory retrieval, or neuron apoptosis in male Wistar rats.

Keywords: Creatine supplementation, Amyloid beta, Alzheimer disease, Memory, Learning, Apoptosis.

Cite this article as: Ali Mohammadi M, Eshraghian M, Zarindast M.R, Aliaghaei A, Pishva H. Effects of creatine supplementation on learning, memory retrieval, and apoptosis in an experimental animal model of Alzheimer disease. *Med J Islam Repub Iran* 2015 (4 October). Vol. 29:273.

Introduction

Alzheimer disease is the main cause of dementia in middle-aged and elderly people (1). Impaired short-term memory and environmental disorientation are early hallmarks of the disease (2). There are medications to treat this disease but efforts

to control Alzheimer have been disappointing so far. Social and medical supports, however, are useful for increasing the quality of life for patients (1).

Studies have shown that brain function is improved when the fuel supplies for neurons, are increased. Considering the crucial

¹. MSc graduated, Department of Cellular- Molecular Nutrition, School of Nutrition Sciences and Dietetics, Tehran University of Medical Sciences, Tehran, Iran. Malek_ank@yahoo.com

². Professor, Department of Epidemiology and Biostatistics, School of Public Health, Tehran University of Medical Sciences, Tehran, Iran. eshraghianmr@tums.ac.ir

³. Professor, Department of Neuroscience, School of Advanced Technologies in Medicine, Tehran, Iran. zarinmr@tums.ac.ir

⁴. PhD student, Neuroscience Research Center, Shahid Beheshti University of Medical Sciences, Tehran, Iran. A.Aghaei@sbmu.ac.ir

⁵. (**Corresponding author**) Assistant Professor, Department of Cellular, Molecular Nutrition, School of Nutrition Sciences and Dietetics, Tehran University of Medical Sciences, Tehran, Iran. pishvahm@tums.ac.ir

role of creatine in neuron energy homeostasis, it seems that creatine could improve brain function by improving the energy status of neurons (3). One study showed that mental training increased creatine levels in neurons (4). Increased creatine levels in the brain following creatine supplementation have also been reported in humans and other rodents (5-9). Acute oral creatine supplementation has been shown to reduce mental fatigue and to decrease task-responsive oxygen demand to activated areas on performance of a serial calculation task (10). Five grams per day of creatine supplementation in healthy subjects appears to enhance performance on validated tests related to intelligence and working memory. Although a dose of 0.03 gr/kg creatine supplementation in young adults had no effect on short-term memory, 20 gr/day of creatine supplementation for a week in healthy elderly was effective in improving short-term memory and spatial memory (3, 11, 12).

The effects of creatine supplementation on short-term memory in people suffering from Alzheimer disease has not yet been studied; however, there is some evidence that neuronal creatine kinase activity declines in neurons under the toxic effects of amyloid beta (13) and another study showed that creatine content of brain decreases during conversion from Mild Cognitive Impairment (MCI) to Manifest Dementia (MD) (14). One *in vitro* study showed the neuroprotective effects of creatine against amyloid beta, while some other studies have found creatine deposits in the neurons of humans with Alzheimer disease and in the neurons of transgenic mice models of Alzheimer (15-17).

Studies on healthy individuals that have shown the positive effects of creatine supplementation on short-term memory and spatial memory along with studies that have reported the neuroprotective effects of creatine give rise to a curiosity about how creatine supplementation can help people suffering from memory impairment, progression of dementia, and neuron loss related to

Alzheimer disease (3, 11, 12, 15). Since inflammation is reportedly caused by creatine deposition in the neurons of both animal models of Alzheimer's disease and people afflicted with it, a big risk is attached to prescribing creatine in a clinical trial (16); thus, the current study investigates the effects of creatine supplementation on spatial memory and neuronal apoptosis in an experimental model of Alzheimer disease.

Methods

Animals

Adult male Wistar rats (200-250g) were obtained from the Pastor Institute (Tehran, Iran).

They were caged at a constant temperature of $21 \pm 1^\circ\text{C}$ with controlled 12h/12h light-dark cycles, and ad libitum access to food and water. The rats were given one week to habituate to the facilities, and then experimental procedures were begun. The guidelines of the Committee of Care in the Use of Experimental Animals were followed, and study procedures were approved by the Ethics Committee of Tehran University of Medical Sciences. Efforts were made to minimize animal suffering and reduce the number of animals used.

Study design

The animals were divided into four groups (n=8 per group): control, sham, AdCr⁻, and AdCr⁺. Animals in the sham, AdCr⁻, and AdCr⁺ groups underwent stereotaxic surgery. Those in the AdCr⁻ and AdCr⁺ groups were given a bilateral amyloid beta injection (4 μl) in the CA1 hippocampus (0.5 $\mu\text{g}/\mu\text{l}$), while the sham group was given a normal saline injection in the same area of the brain. After surgery, the AdCr⁺ group received creatine monohydrate powder mixed in their CHO (2% creatine/diet) while the other groups continued receiving normal CHO. The control group had no surgical or dietary intervention during the study period. After six weeks of dietary intervention, behavioral tests carried on and also histological tests

performed after sacrificing the animals.

Surgery

Human β -amyloid 1-42 (Sigma-Aldrich USA) was solved in 0.1M phosphate buffer saline (PBS; PH=7.4) and then aliquoted and stored at -70°C until use. Every aliquot was incubated at room temperature for 48 hours before injection. The animals were anesthetized with intraperitoneal ketamine (100mg/kg) and Xylazine (10 mg/kg) and then injected bilaterally under stereotaxic conditions with A β or normal saline into the CA1 hippocampus (AP=3.9mm, LR=2.2mm, D=2.7mm). Injections were performed at a rate of 0.5 $\mu\text{l}/\text{min}$ using a Hamilton syringe attached to the stereotax apparatus. Four micro-liters of A β (0.5 $\mu\text{g}/\mu\text{l}$) solution injected in every hippocampus, and the needle was kept in place for one minute after injection before being slowly retracted.

Supplementation

Two percent creatine (Sigma-Aldrich USA) was mixed into the normal CHO using an electric mill. After adding some water and cutting the paste, the creatine and CHO mixture were dried in a 30-45 minute exposure to a continuous warm air stream. After injection, animals in the AdCr⁺ group had free access to this creatine-CHO mixture for six weeks.

Morris Water Maze

The Morris water maze (MWM) procedure was performed 6 weeks after the A β injection.

Apparatus

The water maze consisted of a pool (155 cm in diameter) filled with water ($21\pm 1^{\circ}\text{C}$) to a level 10 cm from the edge of the tank. A transparent Plexiglas platform (10cm diameter) was located 1.5 cm below the surface in the eastern quadrant of the tank (target quadrant). Climbing onto the platform was the only means of escape from the water. The walls surrounding the pool were decorated with distinct extra maze

spatial cues which were kept in fixed positions during the entire experiment to allow the animals to find the hidden platform. The animals' movements were recorded by a CCD camera (Panasonic Inc., Japan) hanging from the ceiling above the MWM apparatus, and locomotion tracking was measured using Ethovision software (version XT7, the Netherlands), a video tracking system for automated analysis of animal behavior.

Habituation

Twenty-four hours before starting the hidden platform training, rats were given 60 seconds to swim in the tank without the platform in order to adapt to their environment.

Procedure

The reference spatial learning and memory tests were performed based on the procedure previously conducted in our laboratory with some modifications for training; the platform was submerged in the eastern quadrant of the pool. Its place remained unchanged throughout training, but animals were released into the water (while facing the tank wall) from different locations chosen randomly from the south, north, west, northwest and southwest between the trials. Rats received one training session per day for 3 consecutive days. Each session consisted of four trials with 1-min inter-trial intervals. The animals were allowed to swim for 60 sec to localize the platform's position in the tank. Rats that did not find the platform within 60 sec were directed to it and allowed to rest on it for 10 sec. Twenty-four hours after the third session, the spatial probe test was given. In it, the platform was removed, and rats were allowed to swim for 60 sec before they were removed. Animals were released into the water at a location near the platform. Behavior was recorded with a video tracking system. Escape latencies, time spent in target quadrant, and swim speed were recorded for subsequent analysis.

Preparation for histological tests

The rats were anesthetized and their brains were fixed through a transcardial fixation surgery (normal saline and 4% paraformaldehyde solution) within 24 hours after the spatial probe test. After that, the brains were kept in a 4% paraformaldehyde solution. In preparation for the histological staining, the rat brains were embedded with paraffin, cut into consecutive 5 μm transverse sections by a microtome, and placed on the poly-D-lysine-coated glass slides. Alternate sections were stained with hematoxylin and eosin (H&E) to observe general morphologic alterations, and neighboring sections were used for thioflavin t and TUNEL staining.

Thioflavin

In order to detect A β plaques in brain sections thioflavin-t (Sigma-Aldrich USA) was used for staining. Brain sections were deparaffinized in xylene, rehydrated, covered with thioflavin-t solution (0.5% thioflavin-t in 0.1N HCl), and incubated at room temperature and away from light for 10 min. Slides were immersed in distilled water twice before being observed through a fluorescent microscope.

TUNEL

In order to detect apoptotic neurons in brain sections the TUNEL staining protocol was performed by use of Kit (TUNEL Apoptosis Detection Kit, Millipour, and UK). Brain sections were deparaffinized in xylene, rehydrated, immersed in PBS, and then incubated at 37°C for 30 min. Of PBS, sections were covered with diluted protein kinase and incubated at 37°C for 20 min. To halt protein kinase activity, sections were washed in PBS solution (4 \times 2 minutes). Every brain section was covered with 50 μl TdT buffer for 10 min. The TdT buffer was removed using a sampler, and then each section was covered with 50 μl TdT mixture solution (90% TdT buffer, 5% dUTP-biotin, 5% TdT) and incubated for 60 min at 37°C. Slides were washed for 5 min by immersing them in TB buffer at

room temperature and then immersed in PBS (4 \times 2 min). After the washing process, sections were covered with 50 μl of blocking solution and incubated for 20 min at room temperature. After removing the blocking buffer with a sampler, 50 μl Avidin-FTC mixture (1 part Avidin FTC, 9 parts blocking solution) was used for every section, and slides were incubated at 37°C for 30 min away from light. To obtain the mean percentage of apoptotic neurons in the hippocampus area, the number of TUNEL positive cells were counted in three adjacent 40X microscopic fields.

Statistical analysis

The data were presented as mean \pm SD using SPSS v.16. Mean escape time, distance traveled to the platform, time spent in target quadrant, swimming speed, and percentage of apoptotic cells were analyzed using the independent samples t-test, to compare sham and control groups, sham and AdCr⁻ groups and also AdCr⁻ and AdCr⁺.

Results

Thioflavin

Thioflavin staining was performed to confirm the induction of Alzheimer's in animals. Beta amyloid (A β) plaques were observed in the brain sections derived from animals in the AdCr⁺ and AdCr⁻ groups, but not in the brain sections of those from the sham group or the control group (Fig. 1).

Learning and memory retrieval

Rats in the AdCr⁻ group had a higher mean escape time than rats in the sham ($p < 0.001$) and control groups ($p = 0.001$), but no significant difference was shown between the AdCr⁺ and AdCr⁻ groups ($p = 0.102$) (Table 1 & Fig. 2). These data showed the learning impairment in AdCr⁺ and AdCr⁻ groups and that creatine supplementation had no effect on the learning ability of rats after A β injection. These results were confirmed by comparison of the mean distance that rats traveled to find the platform in training trials (Table 1 & Fig. 3).

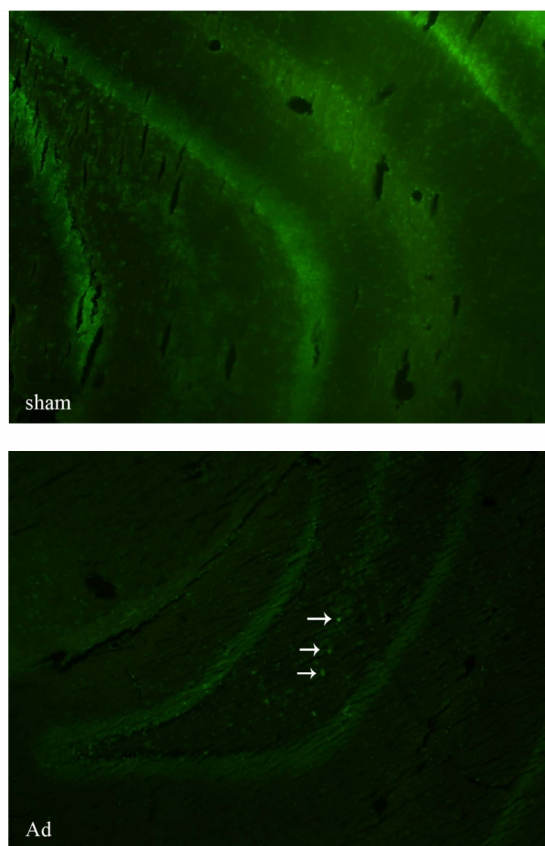


Fig. 1. Thioflavin-T staining of amyloid beta plaques. Arrows show the amyloid beta plaques in the brain section derived from an Alzheimer's induced (Ad). No amyloid beta plaque is visible in brain section of the rat from sham group (sham). Objective $\times 10$

Rats in the AdCr⁻ group spent less time in the target quadrant than rats in the sham and control groups ($p=0.017$). There was no significant difference between rats in the AdCr⁺ and AdCr⁻ groups ($p=0.235$), which indicates that after A β injection creatine supplementation had no effect on the ability to retrieve memories (Table 1).

Apoptosis

The TUNEL staining protocol was performed to detect apoptotic neurons in brain sections (Fig. 4). As is obvious in Fig. 4 the brain sections of rats in the AdCr⁺ and AdCr⁻ groups contained more TUNEL positive neurons than those of the sham group.

The mean percentage of TUNEL positive neurons in the study group (minus the control group) is presented in Table 1. The percentage of TUNEL positive neurons found in the brain sections of rats in the AdCr⁺ and AdCr⁻ groups was significantly higher than those found in the sham group ($p=0.010$, $p=0.001$), but no significant difference was shown in the percentage of TUNEL positive neurons of the AdCr⁺ and AdCr⁻ groups ($P=0.322$), which means that after A β injection creatine supplementation did not affect the apoptotic effect of A β in neurons.

Discussion

The results of our study showed that memory impairments and apoptosis induction caused by a single injection of A β could not be affected by six weeks of creatine supplementation started right after the injection while there are evidence that suggest improving effects of creatine supplementation on learning, memory and mental performance (3, 10, 11). The reason that we could not see any improving effects of creatine supplementation on learning and memory may be due to a possible down regulation of creatine kinase activity caused by A β injection.

Table 1. Descriptive statistics of escape time (in 3 days of trainnig), distance travel (in 3 days of trainnig), time spent (in target quadrant in probe test) and percentage of TUNEL positive neurons in brain section of rats, in different groups

Group	Escape time ^a (Mean \pm SD)	Distance Travel(Cm) ^b (Mean \pm SD)	Time spent(Cm) ^c (Mean \pm SD)	TUNEL ^d (Mean \pm SD)
Control	17.2 \pm 1.19	374.0 \pm 19.76	33.57 \pm 2.58	-
Sham	20.9 \pm 0.99	425.8 \pm 20.48	35.91 \pm 0.91	4.83 \pm 1.32
AdCr-	27.9 \pm 0.53	645.1 \pm 35.12	31.99 \pm 0.78	24.00 \pm 4.45
AdCr+	29.5 \pm 1.07	650.0 \pm 24.65	30.37 \pm 2.00	21.25 \pm 3.47

a. Sham & Control, Independent sample t-test ($p=0.098$), Sham & AdCr-, Independent sample t-test ($p=0.001$), AdCr- & AdCr+, Independent sample t-test ($P=0.102$)

b. Sham & Control, Independent sample t-test ($p=0.119$), Sham & AdCr-, Independent sample t-test ($p=0.002$), AdCr- & AdCr+, Independent sample t-test ($P=0.455$)

c. Sham & Control, Independent sample t-test ($p=0.222$), Sham & AdCr-, Independent sample t-test ($p=0.017$), AdCr- & AdCr+, Independent sample t-test ($P=0.235$)

d. Sham & AdCr-, Independent sample t-test ($=0.001$), AdCr- & AdCr+, Independent sample t-test ($p=0.322$)

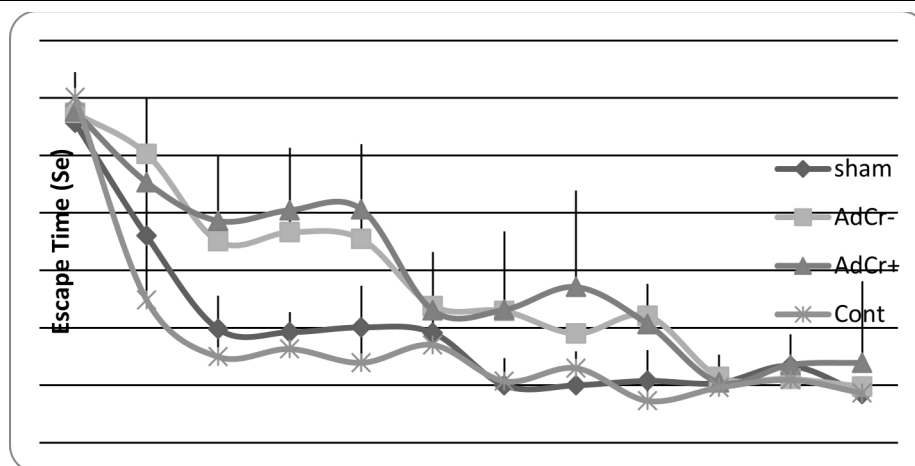


Fig. 2. Mean escape time in every single

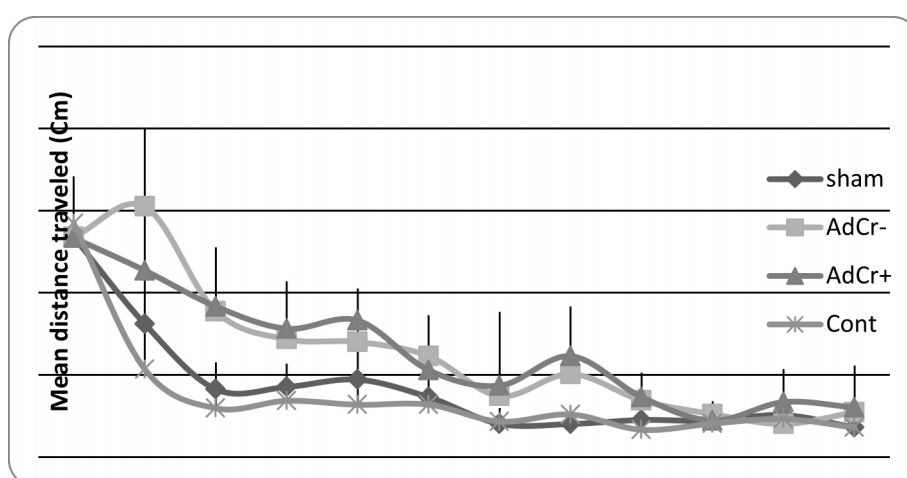


Fig. 3. Mean distance traveled to the platform in every single training

A reduction in creatine kinase activity caused by $A\beta$ has been reported in Alzheimer's disease and in experimental and cell culture model studies (16, 18). One study reported 86% reduction in creatine kinase activity (19). This decrease is important in the pathogenesis of Alzheimer's disease, and it is claimed to be the main cause of cognition impairment in elderly individuals and in Alzheimer's disease (18). Thus the metabolism of creatine in brain is quite different in situations like Alzheimer's disease and elderly. McMorris et al reported positive effects of creatine supplementation in healthy elderly individuals (11) suggesting the creatine supplementation could have improving effects in Alzheimer's disease as well. Nonetheless our result showed no improvement in learning or memory retrieval among rats in the $AdCr^+$ group (compared with rats in

the $AdCr^-$ group), however creatine kinase activity was not measured, and this is one limitation of this study. Based on the results of previous studies, the researchers assumed that the reduction in creatine kinase activity was too severe to attenuate the cognitive side effects by supplying more substrate for the enzyme through creatine supplementation (18, 19). It is also possible that the role of decreased creatine kinase activity in cognitive impairment in the elderly and people with Alzheimer's disease is somewhat exaggerated. Furtherer studies are warranted to investigate effects of creatine supplementation on mental functions in different experimental models of Alzheimer's disease and to clarify the mechanisms by measuring the creatine kinase activity during a similar study.

Present study also showed no difference in mean percentages of TUNEL positive

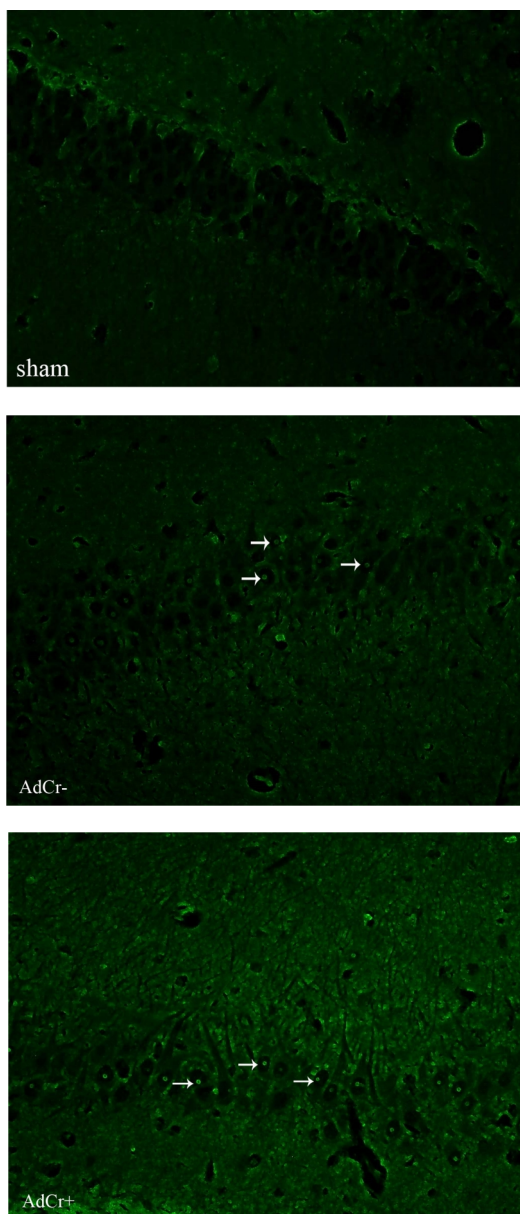


Fig. 4. TUNEL staining. Arrows show the TUNEL positive neurons in brain section picture. Alzheimer induced rats (AdCr- & AdCr+, groups) have more TUNEL positive neurons compare to rats in sham group. Objective $\times 40$

neurons among rats in the AdCr⁺ and AdCr⁻ groups which is in line with our behavioral tests. This results indicated that after A β injection, creatine supplementation did not show any neuroprotective effects against A β toxicity. Country to the results of Brewer's study which showed neuroprotective effects of creatine against A β in vitro (15) due to slow rate of increase in brain creatine following oral creatine supplementation (18). On the other hand, knowing that supplementation started after A β injection,

the increase in the brain creatine supply was probably too slow to show the neuroprotective effects of creatine against A β toxicity. Further research is needed to evaluate the neuroprotective effects of creatine supplementation when it starts before the A β injection.

Conclusion

After A β injection creatine supplementation had no effect on learning, memory retrieval, or neuron apoptosis in male Wistar rats. More studies are needed in the field.

Acknowledgements

The authors extend their sincere thanks to Professor Fereshteh Motamedi for her helpful cooperation in this study. We would like to thank the Research Council of Tehran University of Medical Sciences for their financial support (18530).

Conflict of interest

The authors have no conflict of interest.

References

1. Akhondzadeh S, Noroozian M, Mohammadi M, Ohadinia S, Jamshidi AH, Khani M. Melissa officinalis extract in the treatment of patients with mild to moderate Alzheimer's disease: a double blind, randomised, placebo controlled trial. *Journal of Neurology, Neurosurgery & Psychiatry* 2003 July 1, 2003;74(7):863-6.
2. Cherrier MM, Matsumoto AM, Amory JK, Asthana S, Bremner W, Peskind ER, et al. Testosterone improves spatial memory in men with Alzheimer disease and mild cognitive impairment. *Neurology* 2005;64(12):2063-8.
3. Rae C, Digney AL, McEwan SR, Bates TC. Oral creatine monohydrate supplementation improves brain performance: a double-blind, placebo-controlled, cross-over trial. *Proceedings of the Royal Society of London Series B: Biological Sciences* 2003;270(1529):2147-50.
4. Valenzuela MJ, Jones M, Caroline Rae WW, Graham S, Shnier R, Sachdev P. Memory training alters hippocampal neurochemistry in healthy elderly. *NeuroReport*. 2003;14(10):1333-7.
5. Dechent P, Pouwels PJW, Wilken B, Hanefeld F, Frahm J. Increase of total creatine in human brain after oral supplementation of creatine-monohydrate. *American Journal of Physiology-Regulatory, Integrative and Comparative Physiology* 1999;

277(3): 698-704.

6. Dedeoglu A, Kubilus JK, Yang L, Ferrante KL, Hersch SM, Beal MF, et al. Creatine therapy provides neuroprotection after onset of clinical symptoms in Huntington's disease transgenic mice. *J Neurochem* 2003;85(6):1359-67.

7. Ferrante RJ, Andreassen OA, Jenkins BG, Dedeoglu A, Kuemmerle S, Kubilus JK, et al. Neuroprotective Effects of Creatine in a Transgenic Mouse Model of Huntington's Disease. *The Journal of Neuroscience* 2000;20(12):4389-97.

8. Matthews RT, Yang L, Jenkins BG, Ferrante RJ, Rosen BR, Kaddurah-Daouk R, et al. Neuroprotective Effects of Creatine and Cyclocreatine in Animal Models of Huntington's Disease. *The Journal of Neuroscience* 1998; 18(1):156-63.

9. Pan JW, Takahashi K. Cerebral energetic effects of creatine supplementation in humans. *American Journal of Physiology - Regulatory, Integrative and Comparative Physiology* 2007; 292(4):R1745-R50.

10. Watanabe A, Kato N, Kato T. Effects of creatine on mental fatigue and cerebral hemoglobin oxygenation. *Neuroscience Research* 2002; 42(4): 279-85.

11. McMorris T, Mielcarz G, Harris RC, Swain JP, Howard A. Creatine supplementation and cognitive performance in elderly individuals. *Neuropsychology, development, and cognition Section B, Aging, Neuropsychology and Cognition* 2007;14(5):517-28.

12. Rawson ES, Lieberman HR, Walsh TM, Zuber SM, Harhart JM, Matthews TC. Creatine supplementation does not improve cognitive function in young adults. *Physiology & Behavior* 2008;95(1-2):130-4.

13. Aksenov M, Aksenova M, Butterfield DA, Markesbery WR. Oxidative modification of creatine kinase BB in Alzheimer's disease brain. *Journal of neurochemistry* 2000;74(6):2520-7.

14. Kuzyk A, Kastyak M, Agrawal V, Gallant M, Sivakumar G, Rak M, et al. Association among amyloid plaque, lipid, and creatine in hippocampus of TgCRND8 mouse model for Alzheimer disease. *Journal of Biological Chemistry* 2010;285(41): 31202-7.

15. Brewer GJ, Wallimann TW. Protective Effect of the Energy Precursor Creatine Against Toxicity of Glutamate and β -Amyloid in Rat Hippocampal Neurons. *Journal of neurochemistry* 2000; 74(5): 1968-78.

16. Gallant M, Rak M, Szeghalmi A, Del Bigio M, Westaway D, Yang J, et al. Focally Elevated Creatine Detected in Amyloid Precursor Protein (APP) Transgenic Mice and Alzheimer Disease Brain Tissue. *Journal Name: Journal of Biological Chemistry* 2006;281(1): 39576.

17. Pilatus U, Lais C, de Rochmont AdM, Kratzsch T, Frölich L, Maurer K, et al. Conversion to dementia in mild cognitive impairment is associated with decline of N-actylaspartate and creatine as revealed by magnetic resonance spectroscopy. *Psychiatry Research: Neuroimaging* 2009;173(1):1-7.

18. Wyss M, Kaddurah-Daouk R. Creatine and Creatinine Metabolism. *Physiological Reviews* 2000;80(3):1107-213.

19. David S, Shoemaker M, Haley BE. Abnormal properties of creatine kinase in Alzheimer's disease brain: Correlation of reduced enzyme activity and active site photolabeling with aberrant cytosol-membrane partitioning. *Molecular Brain Research* 1998;54(2):276-87.