

PURIFICATION AND CHARACTERIZATION OF CELL WALL MANNOPROTEINS OF *CANDIDA* *ALBICANS* USING INTACT CELL METHOD

Z. FARAHNEJAD,* M.J. RASAEI,** H. YADEGARI,*
AND M. FROUZANDEH MOGHADAM***

From the *Department of Medical Mycology, the **Department of Clinical Biochemistry, and the
***Department of Medical Biotechnology, School of Medical Sciences,
Tarbiat Modarres University, Tehran, I.R. Iran.

ABSTRACT

Virulence of the opportunistic yeast, *Candida albicans*, involves the interplay of many complex changes including the yeast-hyphae transition, which mainly involves protein changes. Cell wall mannoproteins are found to be the main cause of adherence of *C. albicans* to epithelial cells in the first step of an infection process. In the present study, cell wall mannoproteins of intact yeast were purified using a simple treatment of yeast with mercaptoethanol and sodium dodecyl sulfate followed by Concanavalin A chromatography. Both electrophoretic analysis of the column effluent and Western blot analysis using polyclonal and monoclonal antibodies showed the presence of mannoproteins with molecular weight in the range of 30-50 kDa. Dot blot analysis of the purified antigen with the polyclonal and monoclonal antibodies prepared in this study showed that outer membrane mannoprotein antigens were obtained successfully following the above simple purification strategy.

MJIRI, Vol. 18, No. 2, 167-172, 2004.

Keywords: *Candida albicans*, Mannoproteins, Purification, Characterization.

INTRODUCTION

Candida albicans is a dimorphic opportunistic pathogen that grows as a yeast or as a mycelial fungus depending on the environmental conditions.¹ The major components (80-90%) of cell wall of *C. albicans* are carbohydrates, mannose or polymers of mannose covalently associated with proteins to form glycoproteins, also referred to as manno-proteins. These proteins contain β -glucans that are branched polymers of glucose containing β -1,3 and β -1,6 linkages and chitin, which is an unbranched homopolymer of N-acetyl-D-glucosamine containing β -1,4 bonds. Proteins (6-25%) and lipids (1-7%) are also present as minor wall components.^{2,3} β -Glucans and chitin (0.6-9%) are also present as structural components of the wall (47-60% by weight).

Mannoproteins are considered as the most important antigenic component of *Candida* strains composing 10-30% of the cell wall.¹ This group of proteins are mainly composed of carbohydrate polymannose containing more than 150 strongly bonded mannosyl units.

Mannoproteins play an important role in the process of adherence of *Candida* strains to mucosal surfaces which allows the organism to cause infection. Therefore the study of the cell wall proteins of *C. albicans* is of immense importance in order to understand the actual mechanism of infection leading to probable prevention or treatment of the disease.

In several studies, cell wall polymers have been extracted under controlled degradation of whole cells or of isolated walls using various enzymes for digestion.⁴⁻⁶ As an alternative method, solubilization of cell wall materials using chemicals such as mercaptoethanol (ME), dithiothreitol (DTT), and ethylene diamine has also been reported.⁷⁻⁹

Analysis of antigen expression with polyclonal and monoclonal antibodies has revealed the complex antigenic

Address of Correspondence: Mohammad Javad Rasaei, Tel.: +98-21-8013030; Fax: +98-21-8006544. E-mail: rasaei_m@modares.ac.ir.

Purification of *C. albicans* Cell Wall Mannoproteins

composition of the surface of *C. albicans* cells. These studies suggested that mannoproteins are the main antigenic cell wall components,¹⁰ which may subsequently be used as basic antigen during antibody development. In this case, it is obvious that natural conformation of dominant antigens such as surface antigens is of extreme importance.

In this study, we have attempted to purify the surface mannoprotein of *C. albicans* using intact cells with chemical treatments (sodium dodecyl sulfate (SDS) and ME) followed by Concanavalin A affinity chromatography. In this way, the major conformational characters of mannoprotein were left unaltered and hence the mannoproteins were purified in their natural conformation.

MATERIAL AND METHODS

Organism isolation

Candida albicans was isolated, cultured, and maintained from patients with vaginitis. The isolated strain was identified by using Candida check (Iatron laboratories, Tokyo, Japan) with an additional germ tube test and by examining morphological characteristics.

Microbiological observations of pseudohyphae, hyphae and chlamydospores were made on cornmeal Tween 80 agar incubated at 35°C for 3 days. Culture medium GYEP containing 2% glucose, 0.3% yeast extract and 0.1% peptone (supplemented with penicillin 100 IU/mL and streptomycin 100 µg/mL) were used for *C. albicans*.

Glucose and peptone solutions were autoclaved (Solution A) while water-dissolved yeast extract was filtered through 0.2 µm filters (Solution B). Solutions A and B were mixed and reconstituted to 2 L. The resulting solution was divided into 4 Erlenmeyers and 2 mL of *C. albicans* suspension was added to each container. The containers were incubated and shaken (100 rpm) at 29°C for 48 h.

At the end of incubation time, samples were centrifuged (×800 g, 5°C), the pellet was collected, washed three times with D.D. water, centrifuged three days after each washing step (×800 g, 5°C), and finally it was stored at -20°C. Out of 2 L of culture medium about 22 g of *C. albicans* was obtained.

Antiserum preparation

Candida albicans serotype A from vaginitis cultures was used. These isolates were grown on Sabouraud's dextrose agar plates, washed using saline, harvested by centrifugation and washed three times in sterile saline.

Balb/c mice were inoculated subcutaneously with a 1:1 emulsion of 106 cell suspension in saline and complete Freund's adjuvant. Two weeks later the mice received another inoculation IP with a 1:1 emulsion of 106 cell suspensions in saline and incomplete Freund's adjuvant.

Booster injections were given every 15 days for two months. The mice were checked for antibody production and titer after each bleeding episode which followed after each injection by ELISA method.

ELISA for detection and titration of antibody

An ELISA method was developed and used for detection of antibody. In this method, the crude extract, purified mannoprotein and irrelevant antigens (such as BSA) were coated onto the wells of a microtiter plate in similar concentrations. Wells were washed (PBS, 10 mM, containing 0.05 Tween 80), blocked with PBS containing 0.3% gelatin and added with dilutions of antibody in duplicates (1:500, 1:1000, 1:2000) and incubated for 2 h. A dilution of normal mouse serum, 1:300, was used to indicate nonspecific binding.

At the end of incubation time, wells were emptied, washed four times and added with a 1:2000 dilution of anti-mouse immunoglobulin labeled with HRP (Sigma Chemical Co., St. Louis, MO, USA), incubated for 1 h, and washed with Tween-20 containing PBS buffer (0.05%). Finally tetramethyl benzedene substrate solution was added and the optical density was detected at 450 nm.

Preparation of cell wall extracts

This was performed according to the method of Casson et al.¹¹ with minor modifications as follows. *C. albicans* suspension was treated with lysis buffer (containing 2% SDS and 5% ME dissolved in water). The resulting suspension was vortexed vigorously, incubated in boiling water for 5 min and cooled in ice bath for 2 min.

The resulting solution was centrifuged at 14,000 g for 10

Table I. Analysis of the protein content of the crude and purified mannoprotein from *Candida albicans*.

Serial number	Steps of sample preparation	Amount of protein extract	Condition of extract	Sample used in each step
1	2 L culture	22 g	Wet	<i>C. albicans</i>
2	Freeze dry	13 g	Dry	<i>C. albicans</i>
3	Crude extract	30 mg	—	Cell wall extract
4	Concanavalin A	1.5 mg	—	Purified protein

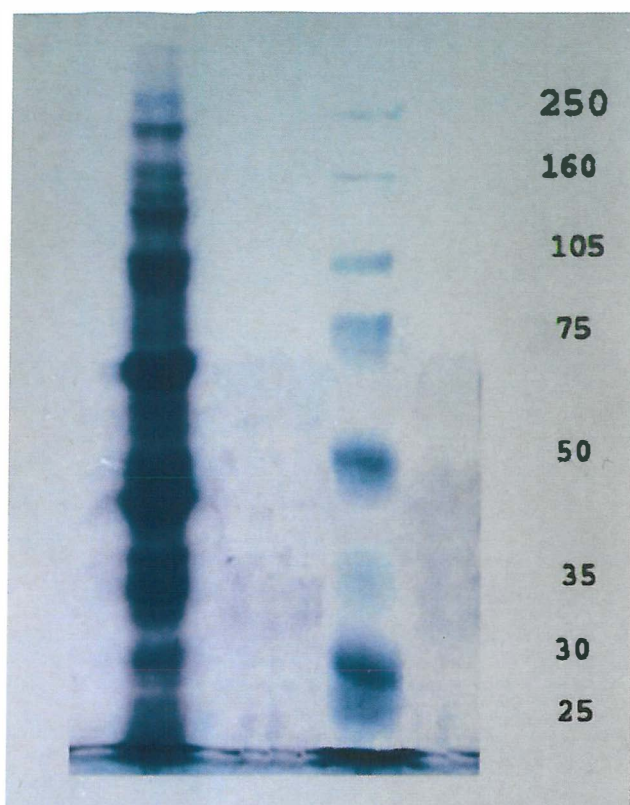


Fig. 1. SDS-PAGE (12% agar) analysis of whole cell wall extract of *Candida albicans* (20 bands are present). Molecular weight markers are shown in the right side of the electrophoretic pattern.

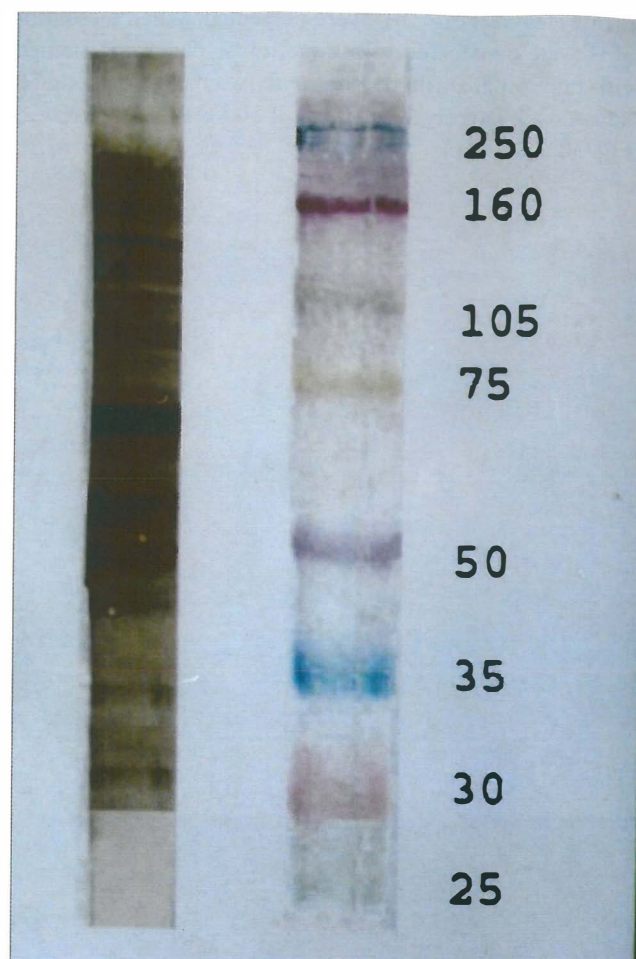


Fig. 2. Western blot analysis of cell wall extract of *Candida albicans*, using whole cell wall proteins.

min, the supernatant was removed and measured for protein content using Bradford protein assay procedure. The resulting solution was dialyzed against 0.1 M acetate buffer solution, pH=6.0 and the clear solution was freeze dried and finally electrophoresed on polyacrylamide gel.

Affinity chromatography

In order to further purify the crude extract, a Sepharose 4B Concanavalin A packing material was used. Ten milliliters of Concanavalin A beads was prepared (as the instruction procedure provided by the manufacturer, Sigma Chemical Co.), and were packed in a 10×1.5 cm column, washed and equilibrated with acetate buffer (0.1 M, pH=6 containing sodium chloride 1 M, calcium chloride, manganese chloride and magnesium chloride, 1 mM). The crude extract (400 mg) was dissolved in a minimum quantity of equilibration buffer (1 mL), loaded onto the column and washed extensively with acetate buffer (0.1 M, pH=6) until no protein was detected in the column effluent.

Mannoproteins were then eluted using acetate buffer containing methyl α -D-mannopyranoside (0.3 M) with a slow rate of 1.5 mL/h. Samples were collected in 2 mL increments and were analysed by SDS polyacrylamide gel electrophore-

sis (SDS-PAGE) followed by Western blotting analysis using polyclonal antibody prepared against cell wall proteins. Further characterization of mannoprotein prepared in the above procedures was performed by dot blot analysis.

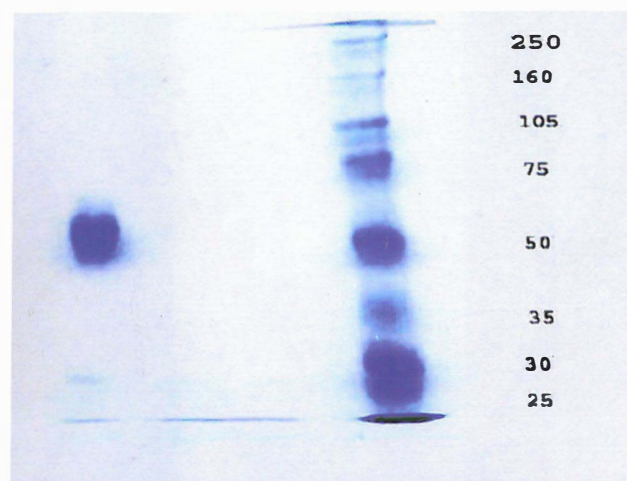
RESULTS

Table I indicates the amount of crude and purified mannoprotein obtained in different steps. It was found that out of 2 L of liquid culture containing 22 g of wet yeast, 1.5 mg of mannoprotein could be obtained. Figure 1 shows the result of SDS-PAGE of the crude extract (after SDS and 2 ME treatment), where around 20 bands (from 25 kDa up to 250 kDa) were obtained. When these extracts were blotted and detected with polyclonal antibodies, 19 bands (from 30 kDa to 250 kDa) were observed (Fig. 2).

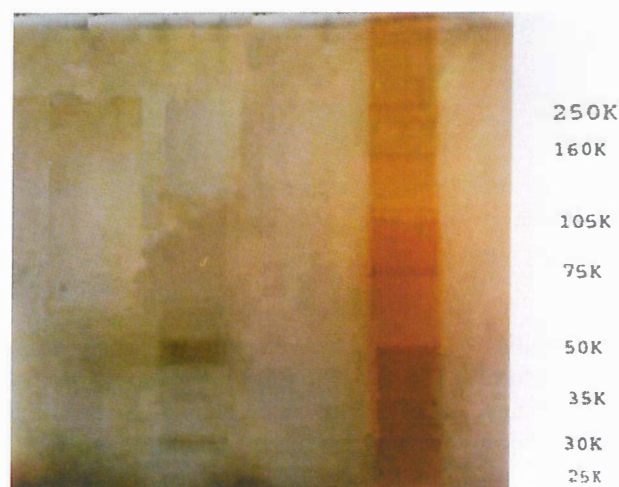
Figures 3A and 3B are SDS-PAGE results for crude extract being further purified using Concanavalin A column. Here the result indicated that only two bands (50 kDa and 30 kDa) both in Coomassie blue staining (Fig. 3A) and silver

Purification of *C. albicans* Cell Wall Mannoproteins

nitrate staining (Fig. 3B) were presented. When these proteins were transferred to nitrocellulose paper and stained with polyclonal antibody, the same two bands (a strong 50 kDa and a relatively weak band at 30 kDa) were observed (Fig. 3C).



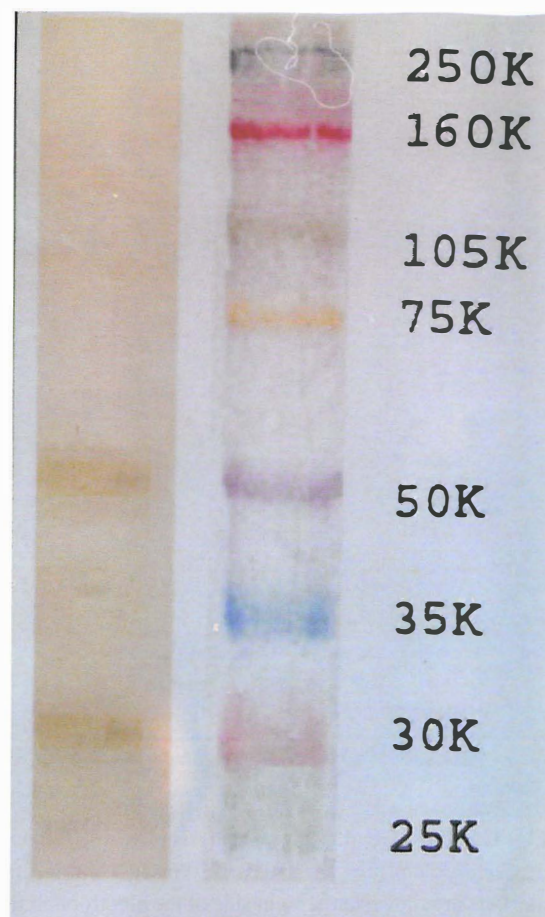
A.



B.

Figure 4 shows the chromatographic pattern of Concanavalin A purification of mannoprotein. Here it was found that only one peak containing mannoprotein (a 50 kDa and a 30 kDa protein as was shown in electrophoresis) was eluted after methyl α -D-mannopyranoside (0.3 M) treatment of the column between tubes 55 to 75.

The results of dot blot analysis are shown in Figure 5. In these results it was indicated that the crude extract reacted with monoclonal antibodies of factor 6 (specific for *C. albicans* obtained from Iatron laboratories, Tokyo, Japan) and polyclonal antibodies prepared in this study (Figs. 5A and



C.

Fig. 3. SDS-PAGE of purified *C. albicans* extract after Concanavalin A chromatography stained with Coomassie blue (A), silver nitrate (B) and then transferred to nitrocellulose paper (C). In every case only two bands in 50 kDa and 30 kDa regions were observed.

5B).

Further, it was shown that purified antigen (mannoprotein) reacted with the same combination of antibodies mentioned as above in a comparably lesser extent (Figs. 5C and 5D) when an equal amount of antigen was blotted. However no reaction was detected between the antibodies when BSA or crude extract of *Aspergillus* were used as antigen. These results indicated that the antigens prepared in this study only reacted with monoclonal and polyclonal antibodies prepared for *C. albicans*.

DISCUSSION

We have shown that the extraction of mannoprotein from the intact cell wall of yeast using chemical method and affinity chromatography with Concanavalin A has more ad-

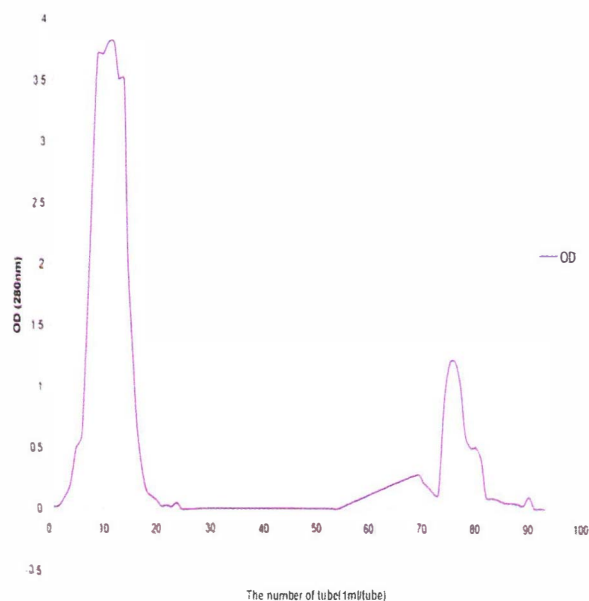


Fig. 4. Chromatographic pattern of column effluent after methyl α -D-mannopyranoside treatment. Only one broad band between tubes 55-75 was observed.

advantages than enzyme digestion. Using this procedure, we expected that purified antigens should retain main epitope features and conformational characters such that they may be successfully used as immunogen and antigen base for assay development. The simple and gentle treatment of *C. albicans* with SDS and 2 ME released a varied array of material from the cell wall. Many reports on analysis of cell wall extracts of *Candida albicans* are available. Ponton and Jones (1986) used DTT, DTT with protease, β -glucuronidase and chitinase to release the wall components.⁸

Casanova et al. (1989) used SDS followed by zymolyase treatment.¹² Yadegari et al. (2001) reported the use of SDS followed by Concanavalin A and DEAE ion exchange chromatography.¹³ Casanova and Chaffin (1991) examined different methods for cell wall release of glycoproteins of *Candida albicans*.¹¹ In their experiments they used 2 ME, zymolyase, SDS, boiling and a combination of these reagents and physical conditions.

In all these procedures an array of proteins detected by SDS-PAGE starting from 20 kDa up to 400 kDa have been reported.¹⁴

After performing Concanavalin A affinity chromatography we found just two bands in the region of 55 kDa (a predominant band) and 30 kDa (a weak band). This showed that mannoprotein may be purified in a simple procedure as explained.

Western blot analysis confirmed this finding and the antibodies prepared against whole yeast extract, although reacting with 21 bands in crude extract, reacted with 2 bands

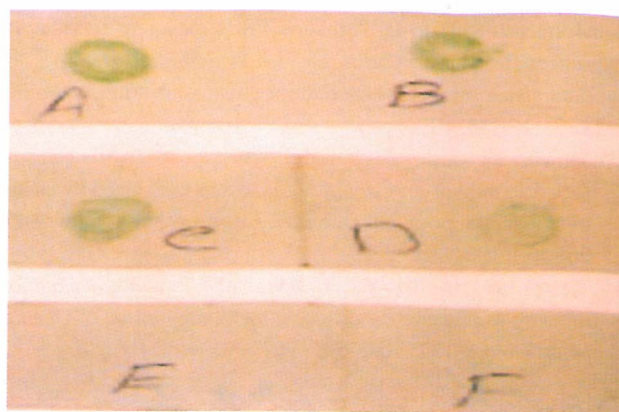


Fig. 5. Dot blot analysis of crude extract detected with polyclonal antibody (A), crude extract detected with monoclonal antibody (B), purified mannoprotein detected with polyclonal (C) and monoclonal antibody (D). A negative control BSA (E) and crude extract of *Aspergillus* (F) was tested to show that the antigen is specific in *C. albicans*.

after the purification procedure was carried out. Using monoclonal antibody prepared against epitope 6 with purified antigen showed that the antigens were reactive towards this antibody in dot blot analysis. We therefore concluded that mannoproteins of low molecular weight (30-55 kDa) may be purified by a two-step treatment explained in this work.

REFERENCES

1. Elorza MV, Marcilla A, Rafael S: Wall mannoproteins of the yeast and mycelial cells of *Candida albicans*: nature of the glycosidic bonds and polydispersity of their mannan moieties. *Journal of General Microbiology* 134: 2393-2403, 1988.
2. Calderone RA, Braun PC: Adherence and receptor relationships of *Candida albicans*. *Microbiol Rev* 55: 1-20, 1991.
3. Cassone A: Cell wall of *Candida albicans*: its function and its impact on the host. *Top Med Mycol* 3: 248-314, 1989.
4. Kitamura K: A protein that participates in yeast cell wall lysis during zymolyase digestion. *Agric Biol Chem* 46: 2093-9, 1982.
5. Marcilla A, Elorza MV, Mormenco S, Rico H, Sentandreu R: *Candida albicans* mycelial wall structure: supermolecular complexes released by zymolyase chitinase and β -mercaptoethanol. *Arch Microbiol* 155: 312-9, 1991.
6. Van Rinsum J, Klis FM, Van den Ende H: Cell wall glucomannoproteins of *Saccharomyces cerevisiae*. *Yeast* 7: 717-726, 1991.
7. Chaffin WL, Stocco DM: Cell wall mannoproteins of *Candida albicans*. *Canad J Microbiol* 29: 1436-44, 1983.
8. Ponton J, Jones IM: Analysis of cell wall extracts of *Candida albicans* by sodium dodecyl sulfate-polyacrylamide gel electrophoresis and Western blot techniques. *Infect Immun* 53: 565-572, 1986.

Purification of *C. albicans* Cell Wall Mannoproteins

9. Mormenco S, Riro H, Aguadoe IY, Sentandreu R: Study of supermolecular structures released from the cell wall of *Candida albicans* by ethylene diamine treatment. Arch Microbiol 166: 327-335, 1996.
10. Brauner DL Cutler JE: Variability in expression of a cell surface determinant on *Candida albicans* as evidenced by an agglutinating monoclonal antibody. Infection and Immunity 43: 966-972, 1984.
11. Casanova M, Chaffin WL: Cell wall glycoproteins of *Candida albicans* as released by different methods. Journal of General Microbiology 137: 1045-50, 1991.
12. Casanova M, Cail ML, Lardenoso L, Martinez JP, Sentandreu R: Identification of wall-specific antigens synthesized during germ tube formation by *C. albicans*. Infection and Immunity 57: 262-271, 1989.
13. Yadegari MH, Moazeni M, Zavarani-Hoseini A, Khosravi A: Extraction of *Candida albicans* cell wall mannoprotein. Modarres Journal of Medical Science 4(2): 207-218, 2002.
14. Sundstrom PM, Tam MR, Nichols LJ, Kenny ZL: Antigenic difference in the surface mannoproteins of *C. albicans* revealed by monoclonal antibodies. Infection and Immunity 56: 601-6, 1989.